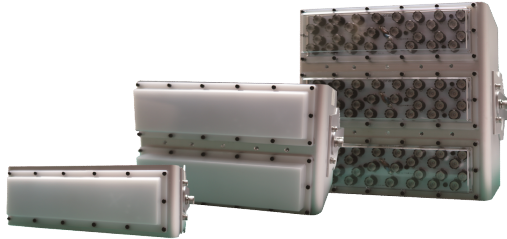


| PHOTOMETRIC | APPLICATION             | SPECIFICATION  | DIMMABLE                                  |
|-------------|-------------------------|--|---|
|             | Warehouse<br>Store Room | Drive Mode<br>AC 50W<br>100W 150W<br>Beam Angle<br>50°<br>120°<br>Waterproof<br>IP66<br>Dimmable<br>External Driver<br>Indoor<br>Outdoor<br>Custom Order | DIM<br>PWM<br>TRIAC<br>DALI<br>DMX<br>SPI |



Input Voltage  
AC50W 100W 150W

### ■ General / Others Specification

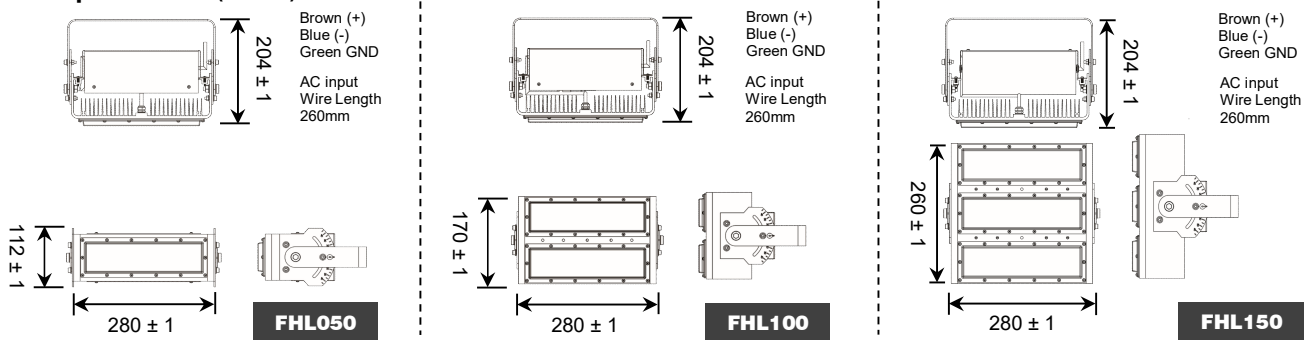
| Items                  | Specification                          |
|------------------------|--|
| Driven Method          | AC100V ~ 277V                          |
| Beam Angle             | 50° / 120° (Diffuse Cover)             |
| CRI                    | > Ra80                                 |
| LED Colour Bin         | 3 Steps MacAdam                        |
| Environment            | Indoor / Outdoor (IP66) <sup>**1</sup> |
| Expected LED Life Span | L <sub>70</sub> = 40,000hrs @ 25°C     |
| Operation Temp. / Hum. | -20°C ~ 50°C / 20% ~ 85% RH            |
| Storage Temp.          | -20°C ~ 70°C                           |

<sup>\*\*1</sup> Not Suitable for use under direct Sun application

### ■ Order / Model Code

| PRODUCT NAME   | POWER                                       | CCT   | CRI         | BEAM ANGLE                              | CASE COLOUR | LED VERSION |
|----------------|---|---|-------------|---|-------------|-------------|
| High Bay Light | 0 5 0 : 50W<br>1 0 0 : 100W<br>1 5 0 : 150W | 6 5 : 6500K<br>5 0 : 5000K<br>4 0 : 4000K<br>3 0 : 3000K<br>2 7 : 2700K | H : Ra > 80 | D : 120° (Diffuse)<br>S : 50° (Diffuse) | S : Silver  | X           |

### ■ Basic Specifications (Unit:mm)



### ■ Specification ( @25°C )

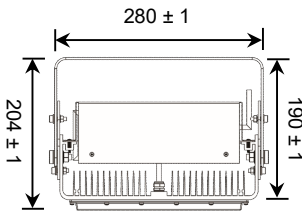
| Models          | CCT   | Lumen<br>(lm) | CRI<br>(Ra) | Power<br>(W) | Beam Angle<br>(°) | Size<br>(L x W x H)<br>(mm) | Ave.Weight<br>(Kg) |
|-----------------|-------|---------------|-------------|--------------|-------------------|-----------------------------|--------------------|
| FHL050-65HDS_AS | 6500K | 4950          | > 80        | 50           | 120<br>(Diffuse)  | 280 x 112 x 204             | 1.80               |
| FHL050-50HDS_AS | 5000K | 4950          |             |              |                   |                             |                    |
| FHL050-40HDS_AS | 4000K | 5020          |             |              |                   |                             |                    |
| FHL050-30HDS_AS | 3000K | 4660          |             |              |                   |                             |                    |
| FHL050-27HDS_AS | 2700K | 4000          |             |              |                   |                             |                    |
| FHL100-65HDS_AP | 6500K | 10300         | > 80        | 100          | 120<br>(Diffuse)  | 280 x 170 x 204             | 2.70               |
| FHL100-50HDS_AP | 5000K | 10300         |             |              |                   |                             |                    |
| FHL100-40HDS_AP | 4000K | 10445         |             |              |                   |                             |                    |
| FHL100-30HDS_AP | 3000K | 9696          |             |              |                   |                             |                    |
| FHL100-27HDS_AP | 2700K | 8430          |             |              |                   |                             |                    |
| FHL150-65H5S_AS | 6500K | 11175         | > 80        | 150          | 50                | 280 x 260 x 204             | 4.50               |
| FHL150-50H5S_AS | 5000K | 11175         |             |              |                   |                             |                    |
| FHL150-40H5S_AS | 4000K | 10415         |             |              |                   |                             |                    |
| FHL150-30H5S_AS | 3000K | 10000         |             |              |                   |                             |                    |
| FHL150-27H5S_AS | 2700K | 9785          |             |              |                   |                             |                    |

\*\* Wire gauge : AWG18 x 3 core

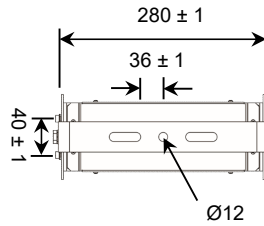
■ Design Item

**View : Side**

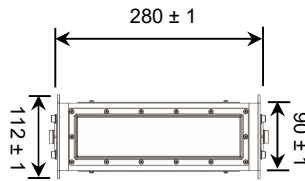
**High Bay Light 50W**



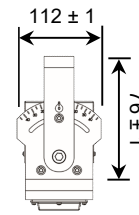
**View : Bottom**



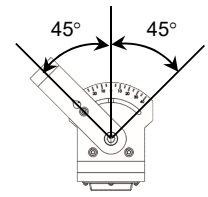
**View : Top**



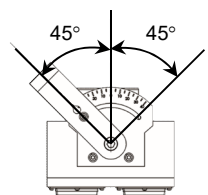
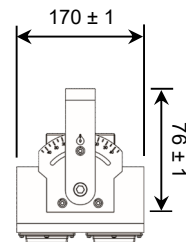
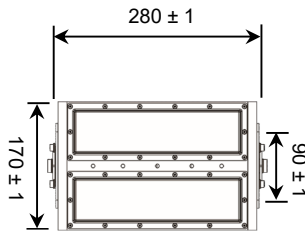
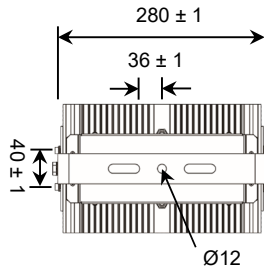
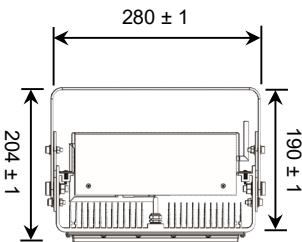
**View : Side**



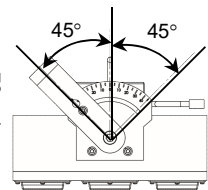
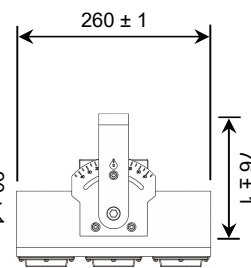
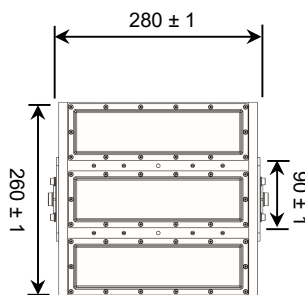
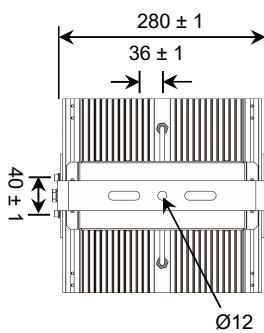
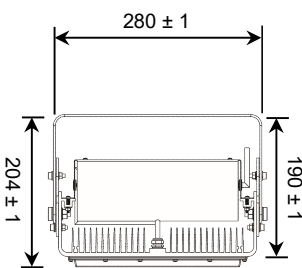
**View : Side**



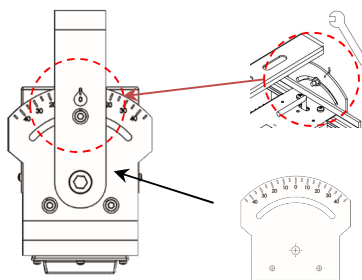
**High Bay Light 100W**



**High Bay Light 150W**



● Handle adjustable method

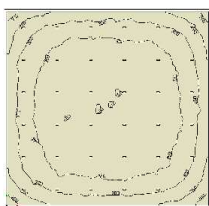


Adjustable angle,  
M8 nut (Inner) by a spanner

Adjustable plate 5° per angle

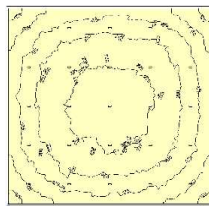
**Lighting distribution angle**

● Floodlight 50W



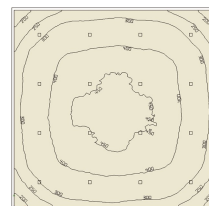
50W (Beam Angle = diffuse 120°)  
Plan Size : 18.5m x 8.5m  
Ceiling Height : 5m

● Floodlight 100W



100W (Beam Angle = diffuse 120°)  
Plan Size : 18.5m x 8.5m  
Ceiling Height : 8m

● Floodlight 150W



150W (Beam Angle = 50°)  
Plan Size : 18.5m x 8.5m  
Ceiling Height : 12m