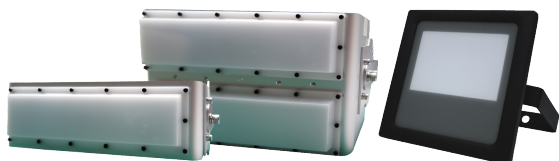


Floodlight Series

PHOTOMETRIC	APPLICATION	SPECIFICATION	DIMMABLE
	Car Porch Car Park Hoarding Bill Board Security Light	Drive Mode AC 30W 50W 100W Beam Angle 105° 120° Waterproof IP65 IP66 Dimmable External Driver Indoor Outdoor Custom Order	DIM PWM TRIAC DALI DMX SPI



Input Voltage
AC30W 50W
100W

■ General / Others Specification

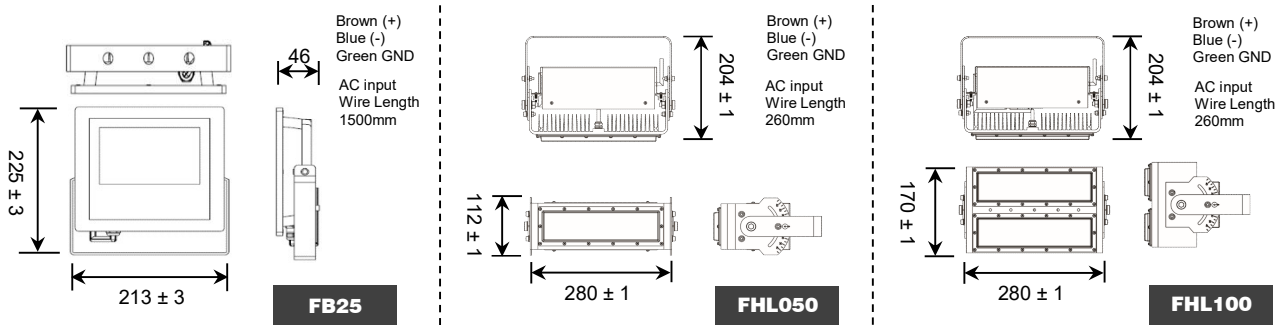
Items	Specification
Driven Method	30W / 50W / 100W
Beam Angle	30W : 105° / 50W, 100W : 120° (Diffuse Cove)
CRI	>Ra80
LED Colour Bin	3 Steps MacAdam
Environment	Indoor / Outdoor (IP65 / IP66) ^{**1}
Expected LED Life Span	L ₇₀ = 40,000hrs @ 25°C
Operation Temp. / Hum.	-20°C ~ 50°C / 20% ~ 85% RH
Storage Temp.	-20°C ~ 70°C

^{**1} Not Suitable for use under direct Sun application

■ Order / Model Code

PRODUCT NAME	POWER	CCT	CRI	BEAM ANGLE	CASE COLOUR	LED VERSION
Floodlight	25 : 30W 050 : 50W 100 : 100W	65 : 6500K 50 : 5000K 40 : 4000K 30 : 3000K 27 : 2700K	H : Ra > 80	D : 120° (Diffuse) Nil : 105° (Diffuse)	B : Black S : Silver	X

■ Basic Specifications (Unit:mm)



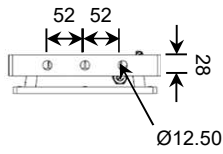
■ Specification (@25°C)

Models	CCT	Lumen (lm)	CRI (Ra)	Power (W)	Beam Angle (°)	Size (L x W x H) (mm)	Ave.Weight (Kg)
FB25-65HB_X	6500K	3290	> 80	30	105 (Diffuse)	198 x 46 x 193	1.23
FB25-50HB_X	5000K	3380					
FB25-40HB_X	4000K	3225					
FB25-30HB_X	3000K	3180					
FB25-27HB_X	2700K	3070					
FBL050-65HDS_A1	6500K	4950	> 80	50	120 (Diffuse)	280 x 112 x 204	1.80
FBL050-50HDS_A1	5000K	4950					
FBL050-40HDS_A1	4000K	5020					
FBL050-30HDS_A1	3000K	4660					
FBL050-27HDS_A1	2700K	4000					
FBL100-65HDS_A1	6500K	10300	> 80	100	120 (Diffuse)	280 x 170 x 204	2.70
FBL100-50HDS_A1	5000K	10300					
FBL100-40HDS_A1	4000K	10445					
FBL100-30HDS_A1	3000K	9696					
FBL100-27HDS_A1	2700K	8430					

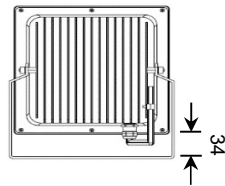
** Wire gauge : AWG18 x 3 core

■ Design Item

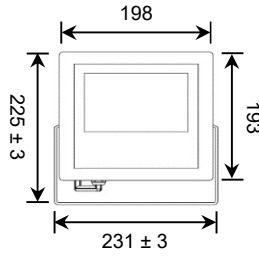
View : Side
Floodlight 30W



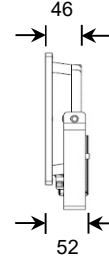
View : Bottom



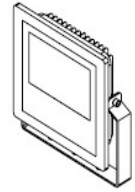
View : Top



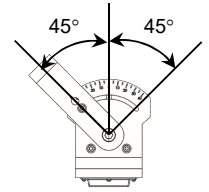
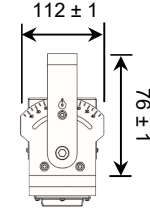
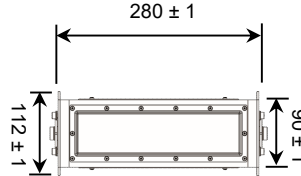
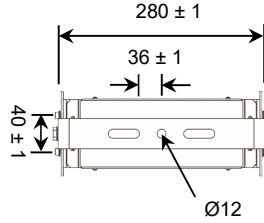
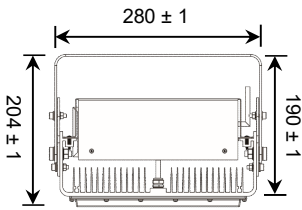
View : Side



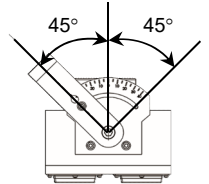
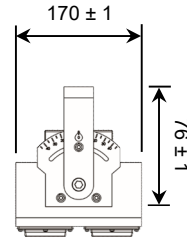
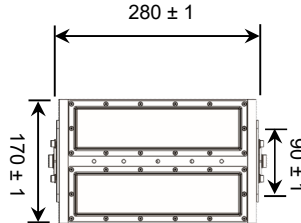
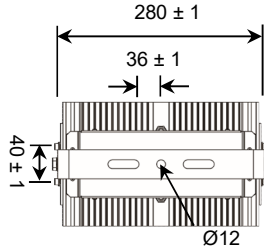
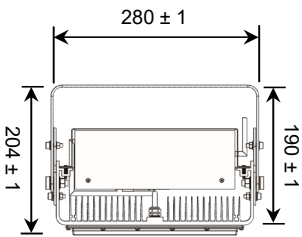
View : Side



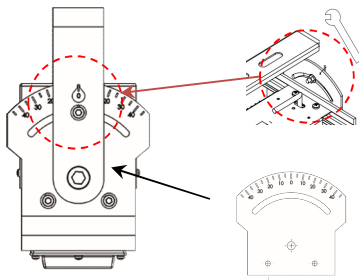
Floodlight 50W



Floodlight 100W



● Handle adjustable method



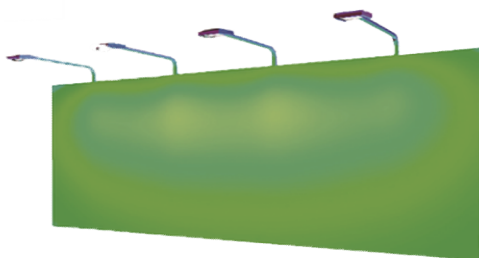
Adjustable angle,
M8 nut (Inner) by a spanner

Adjustable plate 5° per angle

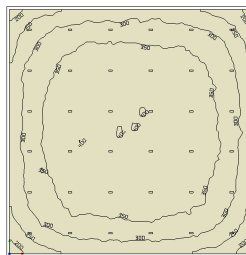
Lighting simulation and distribution angle

● Floodlight 30W

210.0 300.0 500.0 750.0 FL25 Simulation

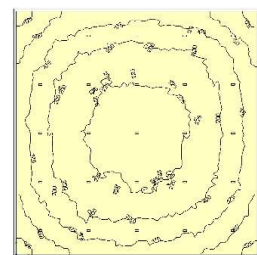


● Floodlight 50W



50W (Beam Angle = diffuse 120°)
Plan Size : 18.5m x 8.5m
Ceiling Height : 5m

● Floodlight 100W



100W (Beam Angle = diffuse 120°)
Plan Size : 18.5m x 8.5m